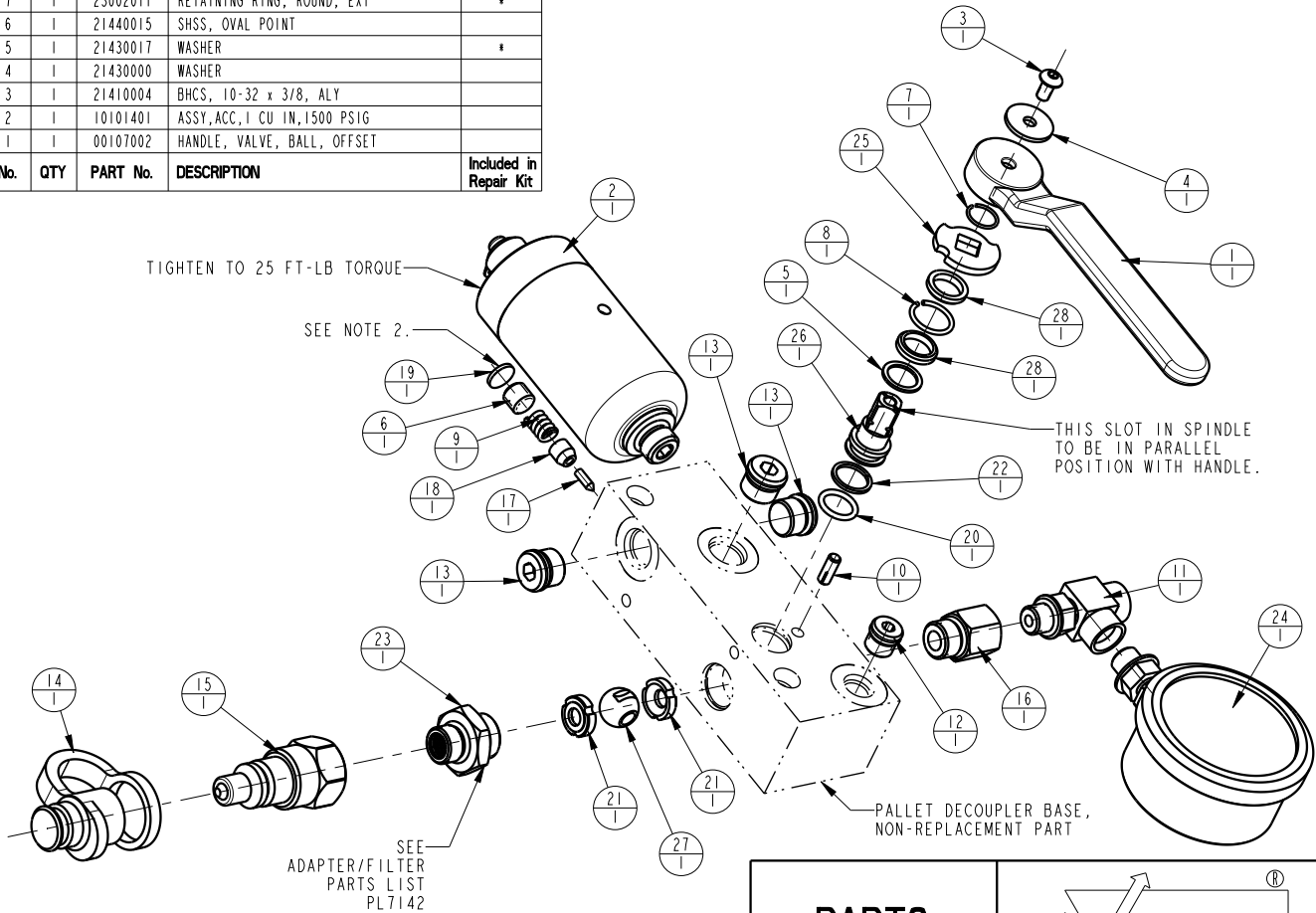



NOTE:  
 1. APPLY LUBRICANT TO ALL SEALS PRIOR TO INSTALLATION.  
 DO NOT USE SILICON TYPE LUBRICANTS.  
 2. SET THE OVER-PRESSURE RELIEF VALVE AT 6,000 PSIG AND  
 THEN INSTALL THE EXPANSION PLUG.

| No. | QTY | PART No. | DESCRIPTION                         | Included in Repair Kit |
|-----|-----|----------|-------------------------------------|------------------------|
| N/A | N/A | 62560000 | KIT, REPAIR, PALLET DECOUPLER       |                        |
| 28  | 2   | 87010193 | SPACER, SPINDLE, STEEL, VALVE, BALL | *                      |
| 27  | 1   | 87010192 | BALL, CONTROL, DIRECTIONAL          | *                      |
| 26  | 1   | 87010191 | SPINDLE, CONTROL, VALVE, BALL       | *                      |
| 25  | 1   | 87010190 | WASHER, LIMIT, VALVE, BALL          |                        |
| 24  | 1   | 72212162 | GAUGE, PRESS, HYDR, 10000 PSI       |                        |
| 23  | 1   | 70040772 | ASSY, ADAPTER/FILTER, PD, 25 MICRON |                        |
| 22  | 1   | 39010042 | BU RING, (-014)                     | *                      |
| 21  | 2   | 39010040 | SEAL, VALVE, BALL                   | *                      |
| 20  | 1   | 39000037 | O-RING, (-906)                      | *                      |
| 19  | 1   | 35349089 | PLUG, EXPANSION, 7/16               | *                      |
| 18  | 1   | 35349057 | RELEASE GUIDE                       |                        |
| 17  | 1   | 35349056 | ROD, RELEASE                        | *                      |
| 16  | 1   | 30801264 | REDUCER, MALE SAE 6 - FEM SAE 4     |                        |
| 15  | 1   | 30772766 | COUPLING, OD, SAE 6, MALE           |                        |
| 14  | 1   | 30719706 | COVER, DUST, OD, SAE 6              |                        |
| 13  | 3   | 30601166 | PLUG, SOCH, SAE 6                   |                        |
| 12  | 1   | 30601144 | PLUG, SOCH, SAE 4                   |                        |
| 11  | 1   | 30231244 | TEE, RUN, SAE 4 FEM - SAE 4 MALE    |                        |
| 10  | 1   | 23521018 | PIN, GROOVE, TYPE H, 3/16, 1/2 LONG |                        |
| 9   | 1   | 23350057 | SPRING, COMPRESSION                 |                        |
| 8   | 1   | 23012008 | RETAINING RING, ROUND, INTL         | *                      |
| 7   | 1   | 23002011 | RETAINING RING, ROUND, EXT          | *                      |
| 6   | 1   | 21440015 | SHSS, OVAL POINT                    |                        |
| 5   | 1   | 21430017 | WASHER                              | *                      |
| 4   | 1   | 21430000 | WASHER                              |                        |
| 3   | 1   | 21410004 | BHCS, 10-32 x 3/8, ALY              |                        |
| 2   | 1   | 10101401 | ASSY, ACC, 1 CU IN, 1500 PSIG       |                        |
| 1   | 1   | 00107002 | HANDLE, VALVE, BALL, OFFSET         |                        |



|                   |  |                                      |
|-------------------|--|--------------------------------------|
| <b>PARTS LIST</b> | <br><b>VEKTEK</b><br>VEKTEK, INC.<br>1334 E. SIXTH AVE. P.O. BOX 625<br>EMPORIA, KS. 66801 U.S.A. |                                      |
|                   | ASSEMBLIES AFFECTED  | PARTS LIST, ASSY, PD, HORZ, 1500 PSI |
| REV               | DATE   | REV                                  |
| DATE: 9-16-97     | PRODUCTION APPROVED FOR RELEASED STATUS ONLY   | SIZE A PL5612                        |

|               |   |                |            |          |
|---------------|---|----------------|------------|----------|
| L             | 5822  | RELEASE        | JDW        | 10/05/25 |
| REV           | IN ACCORDANCE WITH ECN  | EFFECTIVE DATE | REVISED BY | DATE     |
| DRW BY: BUSH  | DRAWING STATUS: <b>Released</b><br>PRODUCTION APPROVED FOR RELEASED STATUS ONLY |                |            |          |
| DATE: 9-16-97 |   |                |            |          |